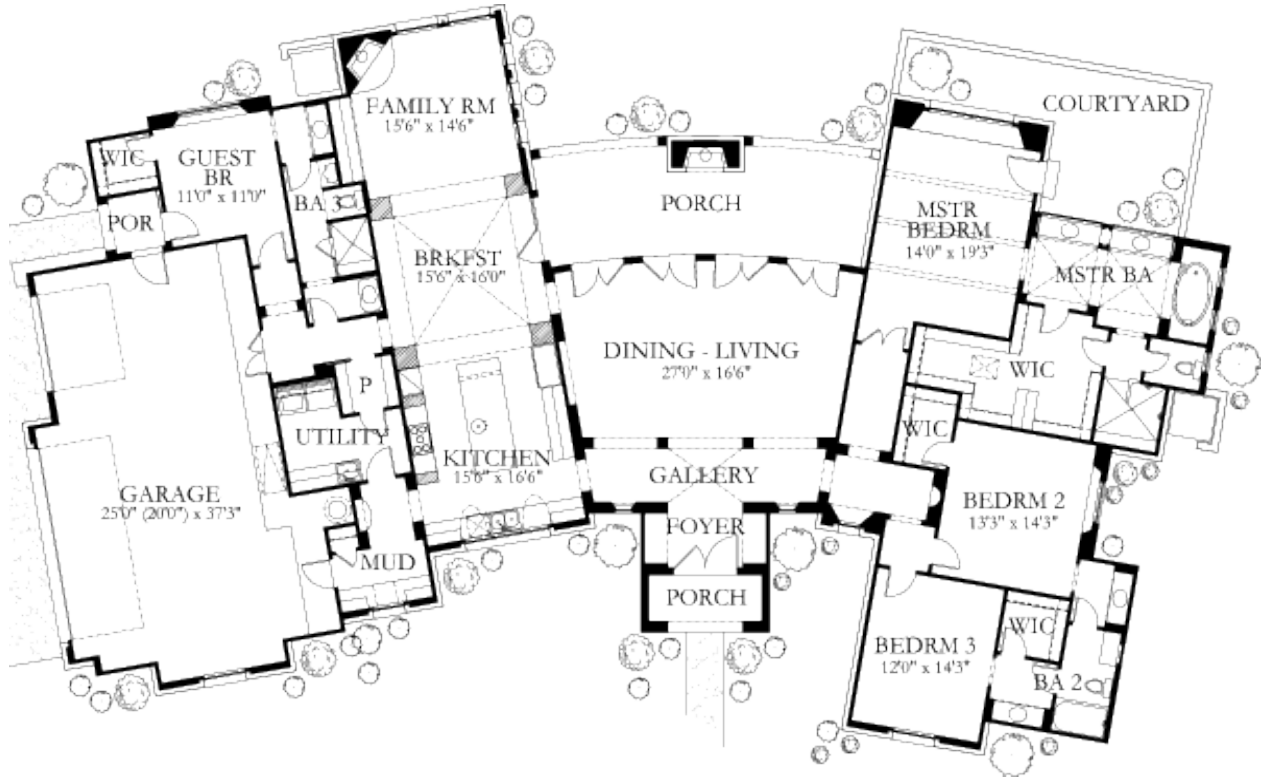




HOME PLAN- 3568 sq ft

FLOOR PLAN





## HOME ELEVATION- 3568 sq ft



## HOME SPECIFICATIONS- 3568 sq ft

Floors: **1**  
Bedrooms: **4**  
Bathrooms: **3**  
Garage Stalls: **3**  
Total Living Area: **3,568** sf  
Plan Width: **113'-3"**  
Plan Depth: **74'-6"**



~ Courtesy of Hajek and Associates