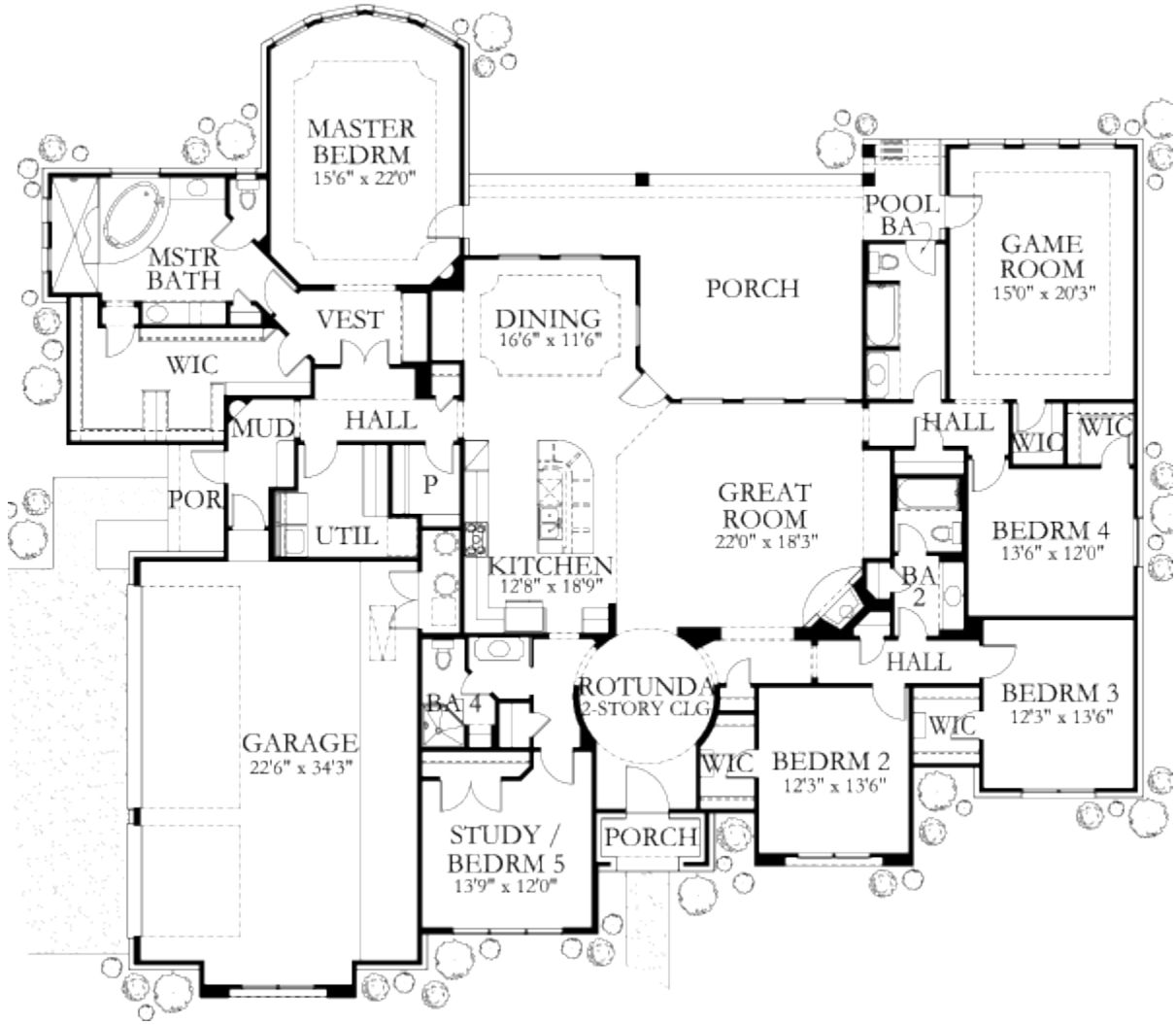




HOME PLAN- 3710 sq ft

FLOOR PLAN





HOME ELEVATION- 3710 sq ft



HOME SPECIFICATIONS- 3710 sq ft

Floors: 1
Bedrooms: 5 - 6
Bathrooms: 4
Garage Stalls: 3
Total Living Area: 3,710 sf
Plan Width: 89'-6"
Plan Depth: 80'-6"



~ Courtesy of Hajek and Associates