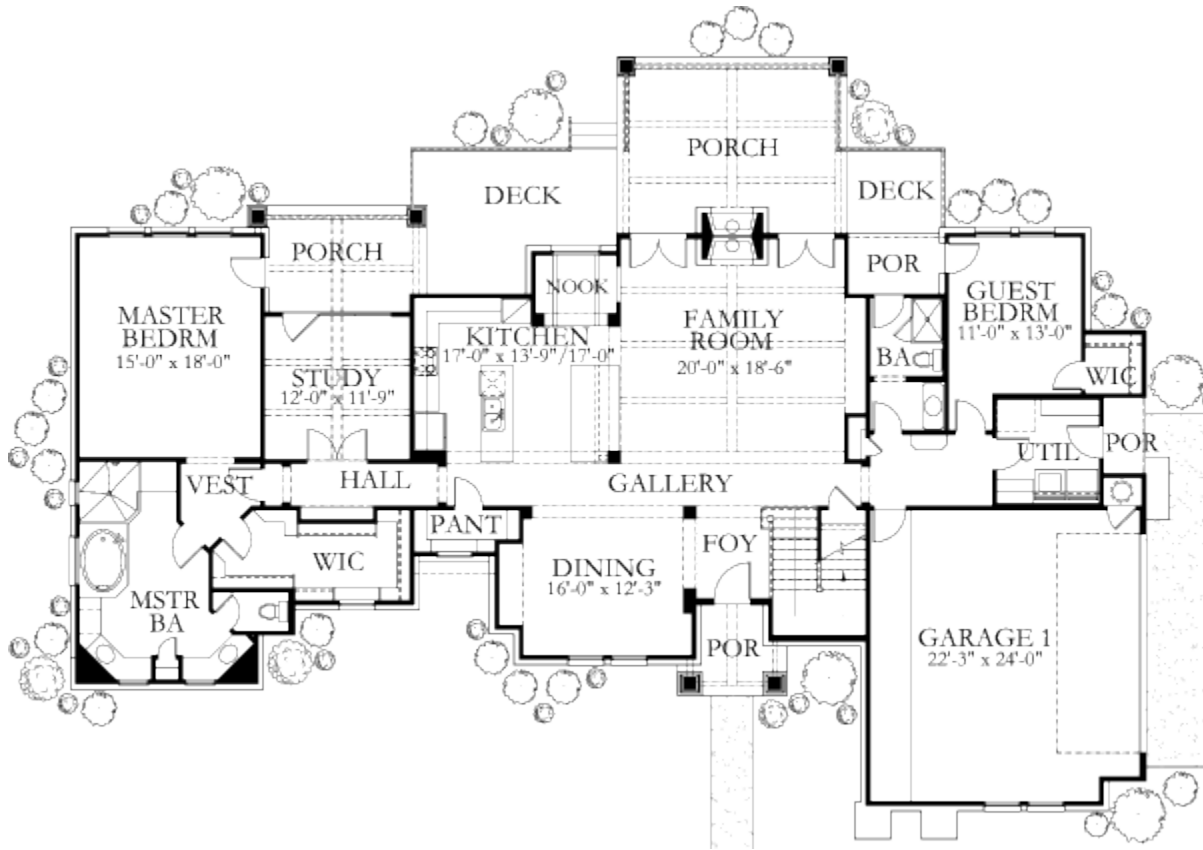




HOME PLAN- 3760 sq ft

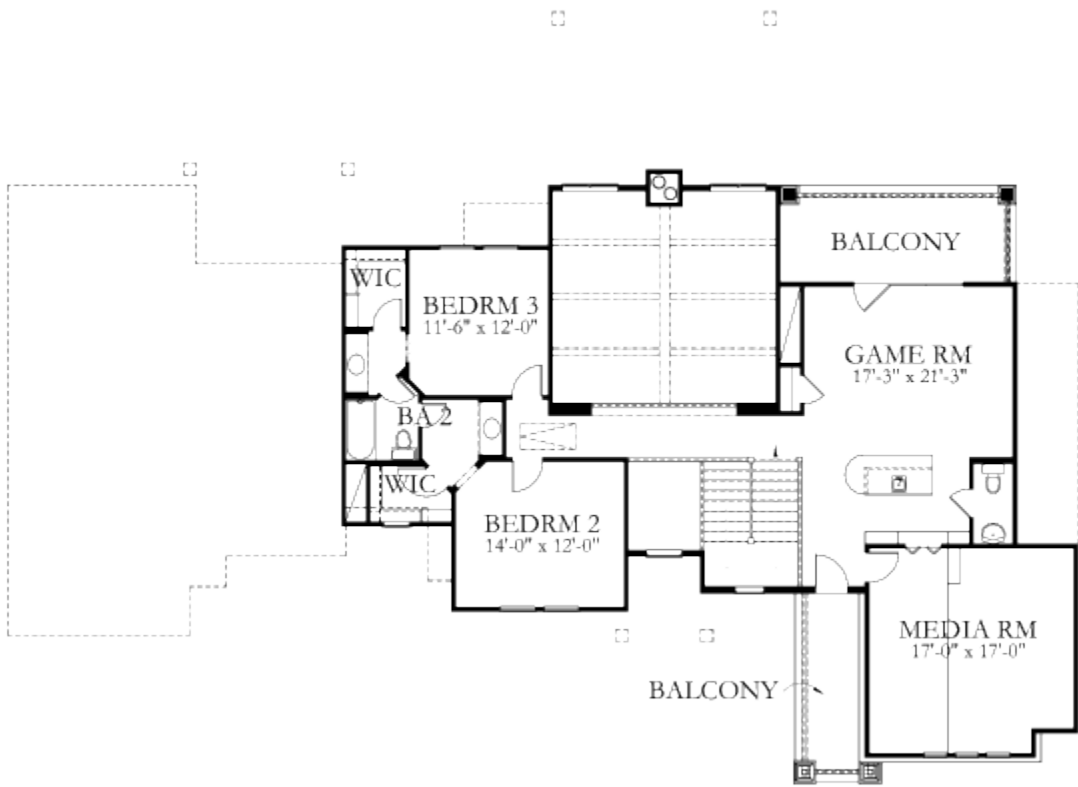
FIRST FLOOR PLAN





HOME PLAN- 3760 sq ft

SECOND FLOOR PLAN



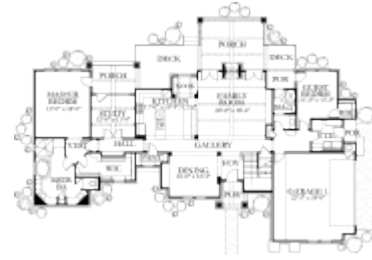


HOME ELEVATION- 3760 sq ft



HOME SPECIFICATIONS- 3760 sq ft

Floors: 2
Bedrooms: 4
Bathrooms: 3½
Garage Stalls: 2
1st Floor Area: 2,432 sf
2nd Floor Area: 1,328 sf
Total Living Area: 3,760 sf
Plan Width: 89'-0"
Plan Depth: 66'-0"



~ Courtesy of Hajek and Associates