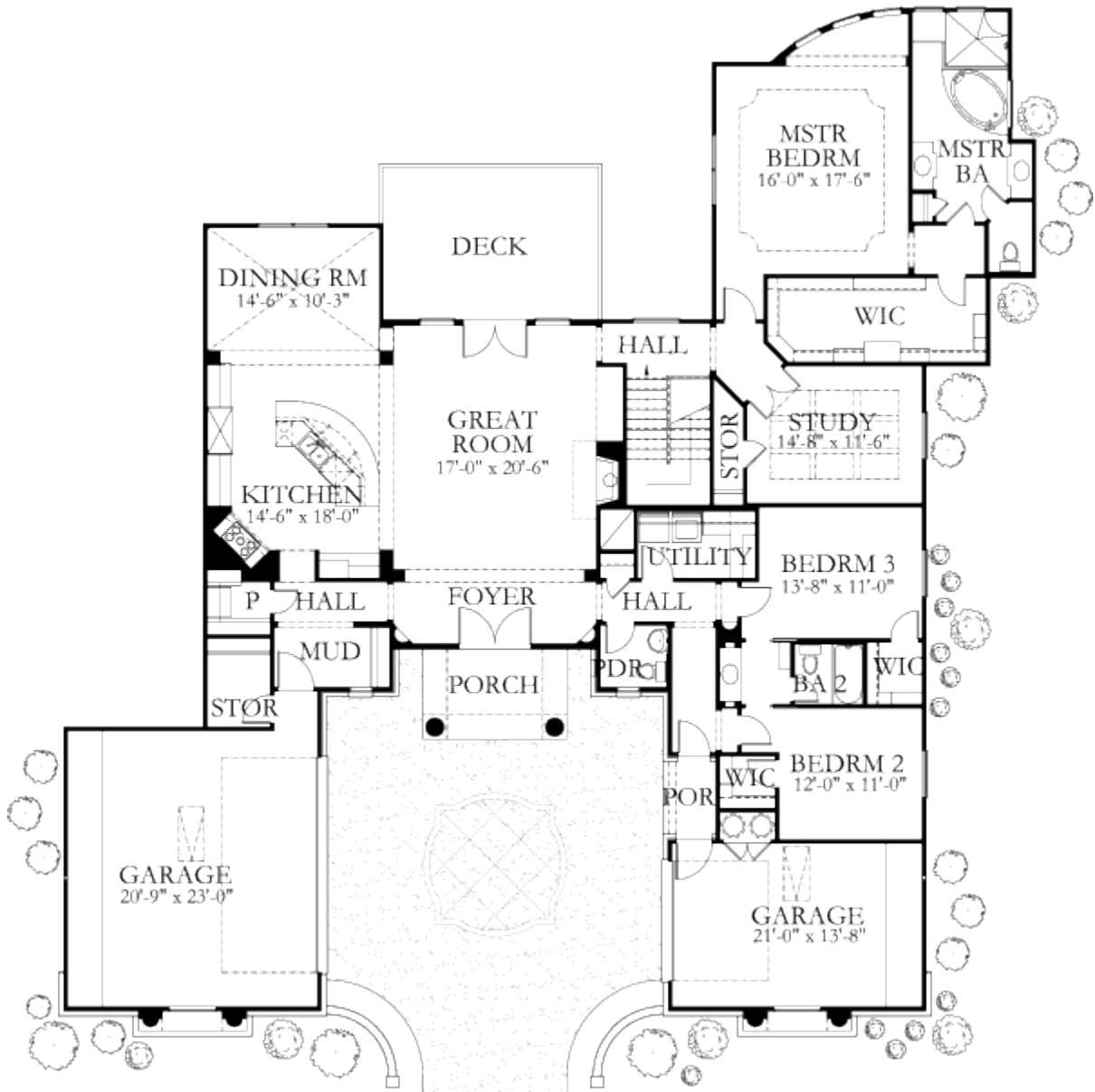




HOME PLAN- 3996 sq ft

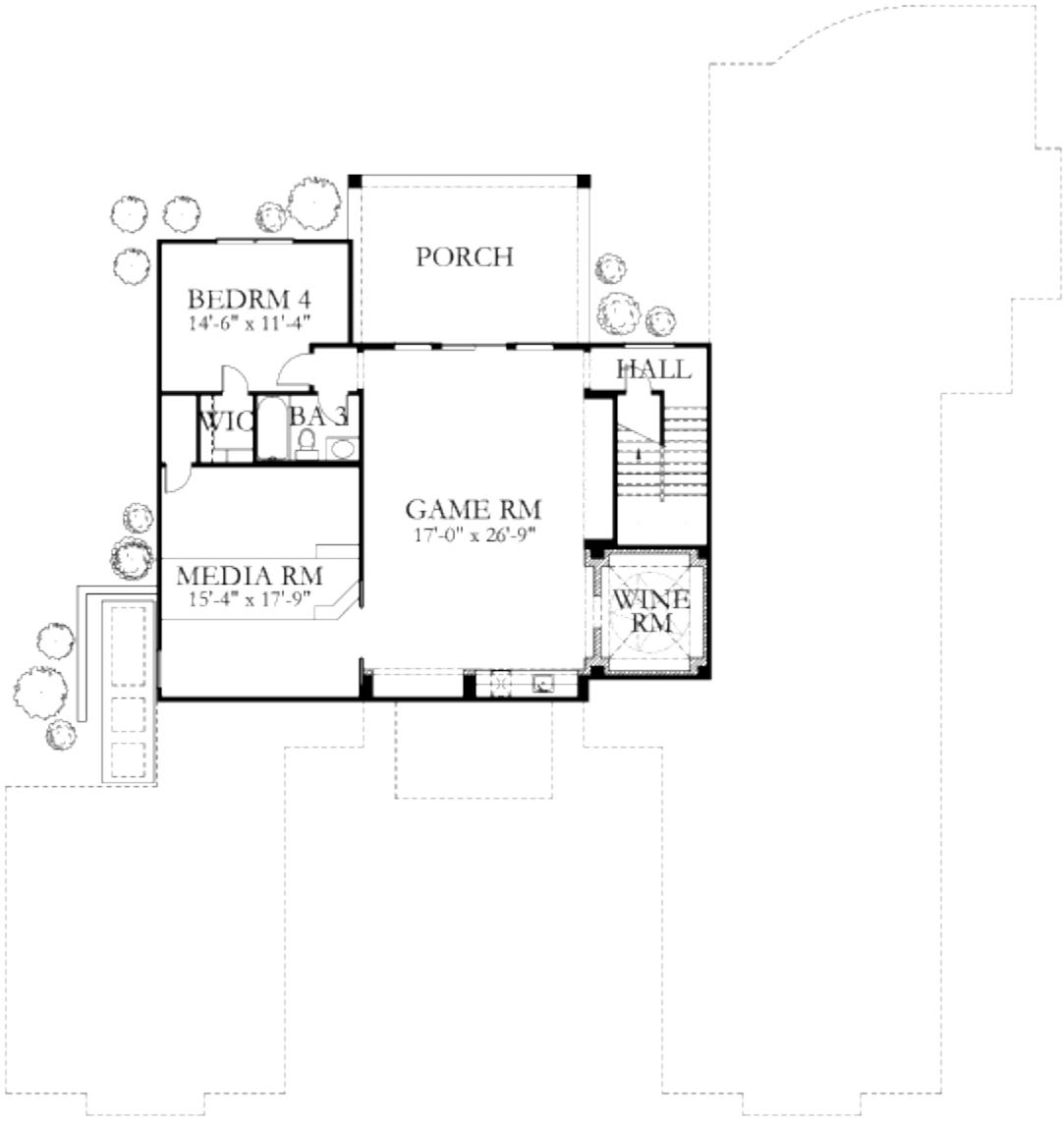
FIRST FLOOR PLAN





HOME PLAN- 3996 sq ft

SECOND FLOOR PLAN





HOME ELEVATION- 3996 sq ft



HOME SPECIFICATIONS- 3996 sq ft

- Floors: 2
- Bedrooms: 4
- Bathrooms: 3½
- Garage Stalls: 3
- Lower Floor Area: 1,275 sf
- Main Floor Area: 2,721 sf
- Total Living Area: 3,996 sf
- Plan Width: 81'-8"
- Plan Depth: 85'-9"



~ Courtesy of Hajek and Associates